



**Spydercrane.com**

# Performance Specifications

---

---

**Telescopic Hydraulic Truck  
Mounted Crane**

**Spyder Model**

**URA344-A2**

Specifications subject to change without notice

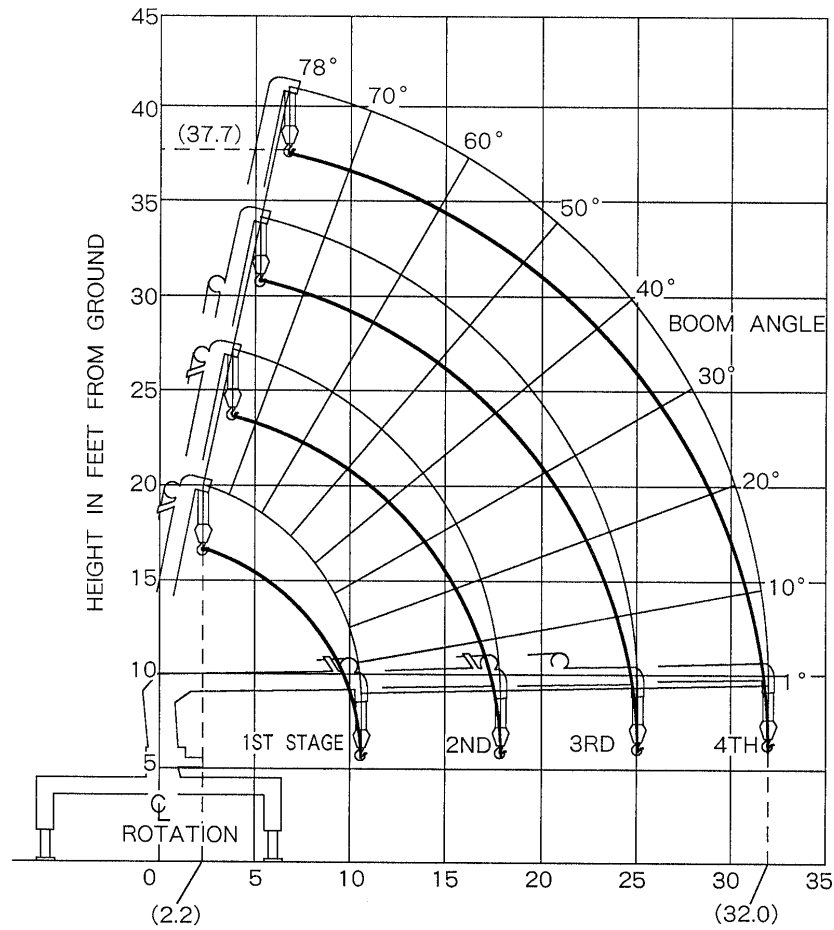
---

**FURUKAWA UNIC PRODUCTS FOR NORTH AMERICA**

<b><i>Crane Capacity</i></b>	
Maximum Lift Capacity	8000 @ 6.8 feet
Work Radius	Minimum 2.6 feet to 32 feet
Boom Length	32.7 feet
Tip Height	41 feet
<b><i>Boom Design</i></b>	Four (4) section box beam telescoping, keel top and bottom with angle indicator.
All Booms Retracted	11.2 feet
Second Stage Extended	18.4 feet
Third Stage Extended Length	25.6 feet
Boom Extending Speed	21.5 feet / 18 seconds.
Boom Lifting Cylinder Design	Double Acting type with counterbalance valve.
Boom Travel Position	Forward over the cab or rear over the body.
Boom Raising Speed	1° to 76° / 9.5 seconds.
<b><i>Winch Design</i></b>	Hydraulic motor driven, spur gear reduction, with automatic mechanical brake.
Single Line Pull	2000 lbs.
Hoisting Speed Single Line	214 feet / minute @ 4th layer.
Hook Speed	53.5 feet / minute @ 4th layer with 4 part loadline.
Hook Block	8000 lbs. capacity, 2 sheaves with latch.
Hydraulic Motor	Axial plunger type.
Wire Rope Construction	6 x Fi (29) Grade B.
Diameter x Length	5/16 inch x 203 feet.
Breaking Strength	8510 lbs.
<b><i>Swing Design</i></b>	Hydraulic motor driven, worm and spur gears reduction, worm self-locking brake.
Swing Range	360° continuous rotation on ball bearing.
Hydraulic Motor	Axial plunger type.
Swing Speed	2.5 rpm.

<b><i>Outrigger Design</i></b>	Out & Down Style, manual pull out on bearings. Vertical hydraulic jacks down. Cylinders have pilot-operated check valves. Audible alarm signals when jacks are in motion.
Retracted Span	6.6 feet
Extended Span	11.2 feet
<b><i>Hydraulic System</i></b>	Multiple control valves, spring centered spool type, with pressure relief valve.
Pressure Relief	2500 psi
Oil Reservoir Capacity	8.5 gallons.
Oil Strainer	100 micron wire mesh.
Return Filter	10 micron replaceable type.
Recommended Hydraulic Pump	2500 psi @ 13 gallons / minute.
Recommended Hydraulic Oil	ISO VG 46 for temps above 32 F, ISO VG 22 below 32F
<b><i>Operators Stations</i></b>	Dual stations curb and street side with crane and outrigger controls on each side. Horn button on panel.
<b><i>Standard Safety Equipment</i></b>	Anti-Two-Block and Outrigger motion Alarms.
<b><i>Electrical System</i></b>	12 Volt
<b><i>Manuals</i></b>	Complete Set. Parts, Service and Operators.
<b><i>Warranty</i></b>	12 months.
<b><i>Available Items</i></b>	Wireless Radio Remote Control. Cable Remote Control. LMI Electronic Overload System with Digital Readout. One Man Steel Basket
<b><i>Minimum Chassis</i></b>	20,000 GVWR
<b><i>Minimum Chassis Frame</i></b>	660,000 RBM. Section modulus 15.9
<b><i>Front Axle</i></b>	7000 lbs.
<b><i>Mounting Bolts</i></b>	Grade 8 threaded ends only. 7/8" NF x 14, 120,000 psi.
<b><i>Automatic Transmission</i></b>	May require neutral lock-up to limit RPM of pump.

RANGE DIAGRAM



BOOM RADIUS IN FEET FROM CENTER OF ROTATION

BOOM DEFLECTIONS NOT SHOWN

<b>Boom Radius Feet</b>	<b>All Booms Retracted</b>	<b>Second Stage Extended</b>	<b>Third Stage Extended</b>	<b>Fourth Stage Extended</b>
6	8000	8000		
6.8	8000	8000		
8	6700	6700	5100	
9	5800	5800	5100	
10.5	4700	4700	4200	2300
12		4100	3600	2300
14		3500	2900	2200
16		2900	2400	1900
18		2600	2100	1700
20			1900	1500
22			1700	1400
25			1500	1200
28				1100
32				1000

Note:

1. Rated loads on the above chart are maximum allowable load with the outriggers fully extended on firm level ground and based on the actual working radius including the deflection of the boom.
2. Weights of hook (70lbs), Slings and any accessories to the boom or load line must be deducted from the rated loads.

**Available Options:**

- 1. Radio Remote Control**
- 2. Electronic Capacity Alert (Shut Down)**
- 3. One Man Steel Basket**