



Spydercrane.com

Performance Specifications

**Telescopic Hydraulic Truck
Mounted Crane**

Spyder Model

URA345-A2

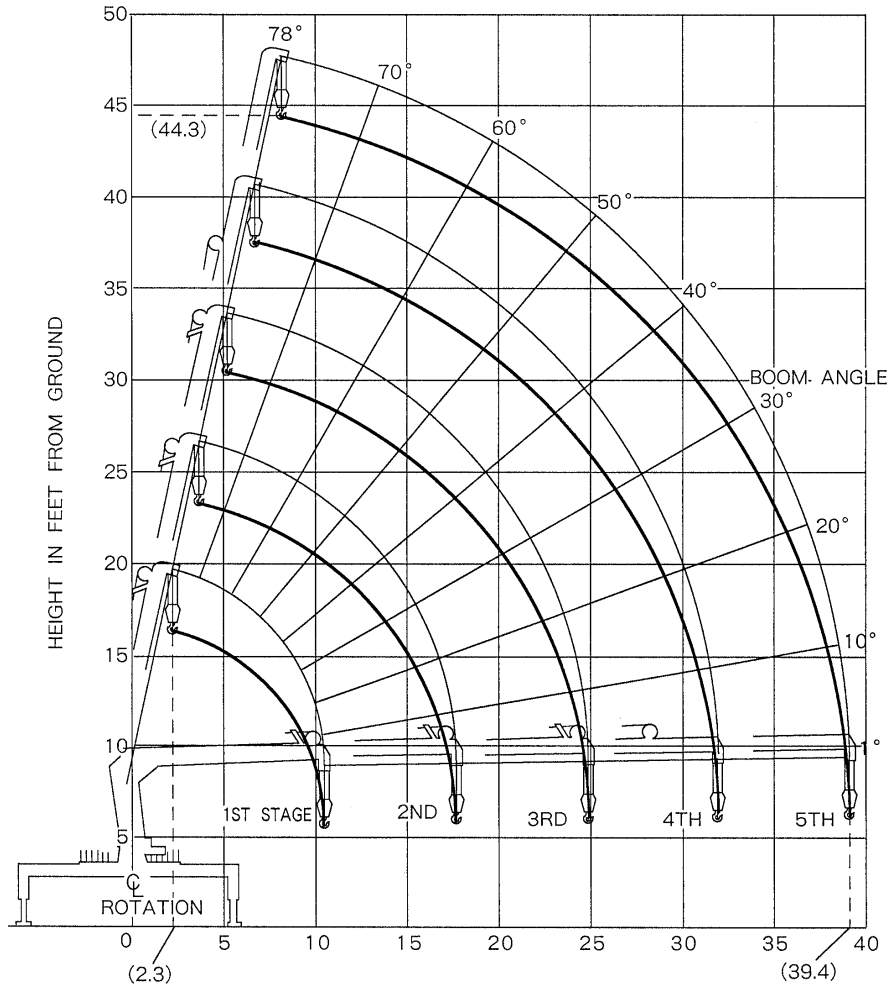
Specifications subject to change without notice

FURUKAWA UNIC PRODUCTS FOR NORTH AMERICA

<i>Crane Capacity</i>	
Maximum Lift Capacity	8000 @ 6.6 feet
Work Radius	Minimum 2.3 feet to 39.4 feet
Boom Length	39.4 feet
Tip Height	50 feet
<i>Boom Design</i>	Five (5) section box beam telescoping, keel top and bottom with angle indicator.
All Booms Retracted	11.6 feet
Second Stage Extended	18.8 feet
Third Stage Extended Length	26.0 feet
Fourth Stage Extended	33.0 feet
Fifth Stage Extended	39.4 feet
Boom Extending Speed	28.4 feet / 21 seconds.
Boom Lifting Cylinder Design	Double Acting type with counterbalance valve.
Boom Travel Position	Forward over the cab or rear over the body.
Boom Raising Speed	1° to 76° / 9 seconds.
<i>Winch Design</i>	Hydraulic motor driven, spur gear reduction, with automatic mechanical brake.
Single Line Pull	2000 lbs.
Hoisting Speed Single Line	236 feet / minute @ 4th layer.
Hook Speed	59 feet / minute @ 4th layer.
Hook Block	8000 lbs. capacity, 2 sheaves with latch.
Hydraulic Motor	Axial plunger type.
Wire Rope Construction	6 x Fi (29) Grade C.
Diameter x Length	5/16 inch x 238 feet.
Breaking Strength	9700 lbs.
<i>Swing Design</i>	Hydraulic motor driven, worm and spur gears reduction, worm self-locking brake.
Swing Range	360° continuous rotation on ball bearing.
Hydraulic Motor	Axial plunger type.
Swing Speed	2.5 rpm.

<i>Outrigger Design</i>	Out & Down Style, manual pull out on bearings. Vertical hydraulic jacks down. Cylinders have pilot-operated check valves. Audible alarm signals when jacks are in motion.
Retracted Span	6.6 feet
Extended Span	11.2 feet
<i>Hydraulic System</i>	Multiple control valves, spring centered spool type, with pressure relief valve.
Pressure Relief	2500 psi
Oil Reservoir Capacity	8.5 gallons.
Oil Strainer	100 micron wire mesh.
Return Filter	10 micron replaceable type.
Recommended Hydraulic Pump	2500 psi @ 14.8 gallons / minute.
<i>Operators Stations</i>	Dual stations curb and street side with crane and outrigger controls on each side. Horn button on panel.
<i>Standard Safety Equipment</i>	Anti-Two-Block and Outrigger motion Alarms.
<i>Electrical System</i>	12 Volt
<i>Manuals</i>	Complete Set. Parts, Service and Operators.
<i>Warranty</i>	12 months.
<i>Available Options</i>	Wireless Radio Remote Control. Cable Remote Control. LMI Electronic Overload System with Digital Readout. One Man Steel Basket
<i>Minimum Chassis</i>	20,000 GVWR
<i>Minimum Chassis Frame</i>	660,000 RBM. Section modulus 15.9
<i>Front Axle</i>	7000 lbs.
<i>Mounting Bolts</i>	Grade 8 threaded ends only. 7/8" NF x 14, 120,000 psi.
<i>Automatic Transmission</i>	May require neutral lock-up to limit RPM of pump.

RANGE DIAGRAM



BOOM RADIUS IN FEET FROM CENTER OF ROTATION

BOOM DEFLECTIONS NOT SHOWN

Boom Radius Feet	All Booms Retracted	Second Stage Extended	Third Stage Extended	Fourth Stage Extended	Fifth State Extended
6	8000	8000			
6.6	8000	8000			
8	6500	6500	4900		
9	5600	5600	4900		
11	4500	4500	4000	2300	
12		4100	3500	2300	1700
14		3400	2800	2100	1700
16		2900	2400	1900	1500
18		2500	2100	1700	1200
20			1800	1500	1000
22			1600	1400	900
25			1400	1200	800
28				1100	700
32				1000	600
35					550
39.5					550

Note:

1. Rated loads on the above chart are maximum allowable load with the outriggers fully extended on firm level ground and based on the actual working radius including the deflection of the boom.
2. Weights of hook (70lbs), Slings and any accessories to the boom or load line must be deducted from the rated loads.

Available Options:

- 1. Radio Remote Control**
- 2. Electronic Capacity Alert (Shut Down)**
- 3. One Man Steel Basket**